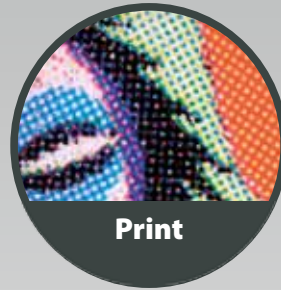


Explore, examine, capture and share!

Dino-Lite

Digital Microscope



product
design
award

2009

Dino-Lite
Digital Microscope

Applications

- **Industrial inspection:** quality control, assembly, repair
- **Life sciences :** ear, eye, nail, skin/scalp photography and analysis
- **Printing and textiles:** quality control, measurements
- **Educational:** science lab, presentation, training, insect & plant study
- **Personal:** hobbies, collection documentation, paintings, antiques
- **Professional:** law enforcement, conference aid, counterfeit detection



The Dino-Lite is a compact digital microscope with a lot of new possibilities compared to the traditional microscope. The Dino-Lite can be connected to a computer and allows you to record moving and still images as well as time lapse recording. These can be shared directly over the internet (webcam technology).

IC inspection AM313T



Clock inside AM313T



Ballpoint tip AM413T



Spores



Bee wing



Mechanical inspection



IC inspection and verification



Money inspection AM413T



The Dino-Lite has numerous professional applications such as industrial, forensic, life-sciences and educational. New application areas are opened up by the expanding line of models with different specifications.



DINO-X-LITE PRO SERIES (METAL HOUSING)

The most robust Dino-Lite series available. The aluminium housing offers enhanced protection and durability and has the best look and feel.

AM413MT

- Dino-Lite Pro model housed in a robust aluminium alloy casing
- Resolution: 1280x1024 pixels (1.3 megapixel)
- Adjustable magnification: 10x~70x, 200x
- Interface: High speed USB image transmission, USB 2.0 (PC)
- Output: picture, video and time-lapsed video in a click
- Measurement and calibration options, (e.g. line, radius, circle, 3-point circle)
- With build-in diffuser for diffuse lighting (on 413MT, 413MT5)



Many other specialized versions of the Dino-X-Lite models are available, all with a robust aluminium housing. Models with UV lighting, polarizing filter or with a long working distance (LWD).

Available models in the Dino-X-Lite Pro Series:

- AM413MT, AD413MT,
- AM413MT5 (with 500x fixed magnification)
- AM413MTZ (with polarizer)
- AM413MTL, AD413MTL (with Long Working Distance)
- AM413MT-VW/FVW, AM413MTL-VW/FVW (with UV LED lights)
- AM412MP, AM412MZP (with TV connection)



DINO-LITE PRO SERIES, LONG WORKING DISTANCE (LWD)

The Long Working Distance models are designed to provide magnification at a greater working distance. This makes it an ideal solution for tasks where you need more working distance from the object, for example repair, rework or assembly tasks.

AM413TL

- Resolution: 1280x1024 pixels (1.3 megapixel)
- Adjustable magnification: 10x ~ 92X
- Interface: High speed USB image transmission, USB 2.0 (PC)
- Measurement and calibration options, (e.g. line, radius, circle, 3-point circle)

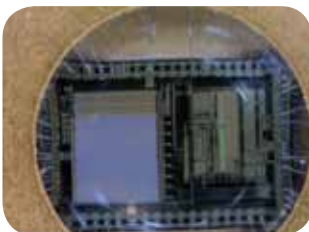


AD413TL

- Same specifications as AM413TL, but with detachable caps, this enables special caps such as the detachable 45 degree mirror making it possible to view objects at 90 degree, such as viewing the side wall of a tube, or examining the printed circuit board at low angle for checking the soldering profile.



Also available in a model with robust aluminium housing.



DINO-LITE PRO SERIES AND PRO2 SERIES

The AM413 PRO AND PRO2 series are designed for the professional market. A model with highest image quality (1.3 megapixel) and measurement features in the software. These models can be used in a wide variety of businesses such as industry (quality control, surface checking, assembling, etc.) scientific research, dermatology (e.g. skin/scalp examination), or law enforcement (counterfeit ID, forensic).

AM413T/ AM411T

- Resolution: 1280x1024 pixels (1.3 megapixel)
- Adjustable magnification: 10x~70x, 200x
- Interface: High speed USB image transmission, USB 2.0 (PC)
- Output: picture, video and time-lapsed video in a click
- Measurement and calibration options, (f.e. line, radius, circle, 3-point circle) (not on AM411T)



AM413TZ

Same specifications as AM413T, but with built-in polarizer.



AM413T5

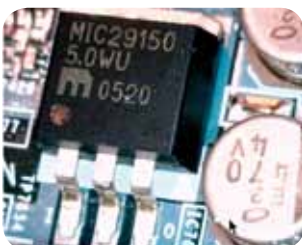
Same specifications as AM413T, but with 500x fixed focus magnification.



AD413T PRO2 SERIES

The Dino-Lite AD Pro2 series is designed for the professional market. The AD models are standard equipped with detachable and exchangeable caps

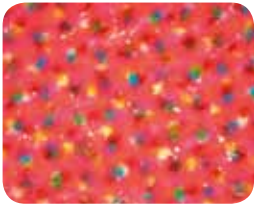
- AD413T – features a closed and an open cap
- AD413TL – two different caps, open and closed with Long Working Distance
- AD413ZT – three different caps, open, closed and a polarizing cap
- AD413MT – AD model with metal housing. An open and a closed cap
- AD413MTL - AD model with metal housing. An open and a closed cap. Long working distance
- AD413MTLZ - AD model with metal housing. An open, a closed cap and a polarizing cap. Long working distance



DINO-LITE PLUS SERIES

The AM313 PLUS SERIES is the basic model range for professional applications which do not necessarily need the highest image quality. Can be used for science and engineering, detailed repair, assembly and quality control (e.g. electronics, mechanical), hobbies & collecting (coin, stamp, watch, jewelries etc.), law enforcement (counterfeit ID, forensic).

The AM313/AM313T models have an image resolution of 640x480pixels (VGA), an adjustable magnification of 10x~70x, 200x and built-in 8 white-light LED's. The software features measurement and calibration options, (e.g. line, radius, circle, 3-point circle). The AM313T5 has the same specifications as the AM313T model, but with 500x fixed focus magnification.



DINO-LITE 211/311 SERIES, BASIC MODELS

Basic models of the Dino-Lite product range. An affordable solution for home or school use. Suitable for hobbies & collections (coins, stamps, watches, jewels etc.). The Dino-Lite AM-211 offers a magnification which goes up to 200x and has USB 1.1. The AM311S and AM311ST offer USB 2.0 connectivity and 8 LED's, as well as the possibility to turn the LED's on/off and the 311ST additionally has the microtouch button.



SPECIAL LIGHTING

The Dino-Lite is self-illuminating with LED-lights. The Ultraviolet (UV) light versions can be used for scientific, medical and engineering research and inspection, as well as industrial quality control (parts inspection, failure analysis) and dermatology (skin/scalp).

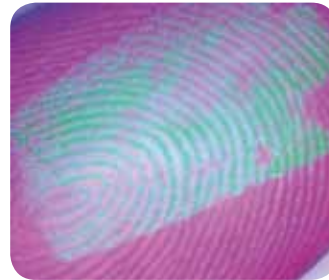
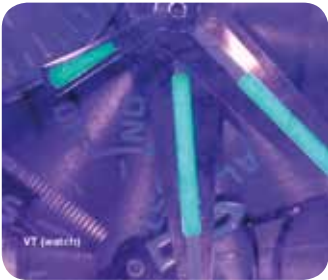
AM413FVT/ AM413FVT2/ AM413FIT

- Resolution: 1280x1024 pixels (1.3 megapixel)
- Adjustable magnification: 10x~70x, 200x
- Near UV 390nm-400nm
- Emission Filter Cutoff Wavelength: 425nm
- AM413FVT2: near UV 375nm
- Emission Filter Cutoff Wavelength: 425nm
- AM413FIT: built-in 8 Near Infrared Light LED's



AM413T-FVW/ AM413T-VW:

Same specifications as AM413FVT, but with the option to switch between white LED light and UV LED light. VW models do not have the UV filter. Also available in a Longer Working Distance version (AM413TL-FVW and AM413TL-VW)



MOBILE SOLUTIONS

For mobile applications the AMK412P-C200 has been designed as a dedicated combination of a Dino-Lite and a Portable Digital Recorder. The recorder has a 3,5 inch LCD panel and pictures and videos can be recorded onto a SD card. Dedicated Dino-Lite models with Polarizer, Long Working Distance or Ultra Violet lighting are available.

AMK412P-C200:

- Resolution : 628x586 (PAL)
- adjustable magnification: 10-50x, 200x
- Storage: SD card (max. 2 gb)
- Panel: 3,5 inch LCD
- Nr. of LED's: 8



LIFE SCIENCES

AD413ZT Dermoscope

The AD413ZT with the special closed cap and its special polarizing cap is ideal for making detailed pictures of the skin. The FC-CC1 closed cap and the FC-Z-CC2 are detachable to allow for cleaning. Additional closed caps can be ordered separately. The AD413ZT Dermoscope is the Pro model with 8 LED's, a 1.3 megapixel resolution and a magnification of 10~70x, 200x.



AMH-EUT Earscope Pro

The Earscope is a compact and safe solution to make magnified digital pictures of the inner ear. The cap is detachable to enable hygiene measures. The AMH-EUT is the Pro model with 1,3 megapixel resolution and magnification of 55~90x. This model is delivered with disposable specula of 3, 4 and 5 mm (five each).



AMH-RUT Iriscope

A new, fast and easy way to research eyes. The Iriscope has two LED's that illuminate the side of the eye which reduces reflections. The images have a maximum resolution of 1,3 megapixel.



AMH-DUT Dentalscope

Especially designed for dental applications. The special holder accommodates the standard dental mirror that can be turned in different directions.



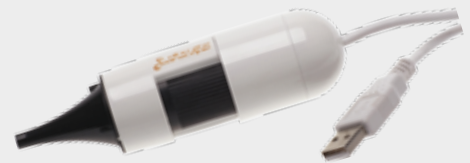
AMH-N5UT Nailscope

The Nailscope is a special version intended for researching the micro-circulation (microcapillar function) under nails. The magnification rate is 500x and the resolution is 1.3 megapixel.



AM311H Basic Earscope

This basic Earscope is a compact and safe solution to make in-ear pictures of the ear drum and the ear canal, mainly for home use. The AM311H has a 640x480 resolution and magnification of 20~30x. Pictures can be stored and exchanged easily within the software.



AM311ST-SC Scalpscope

Equipped with a special cap that allows easy separation of hair to inspect the scalp for dermatology or lice.



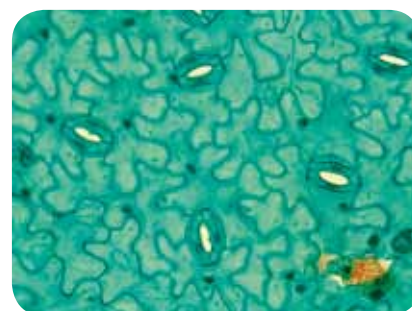
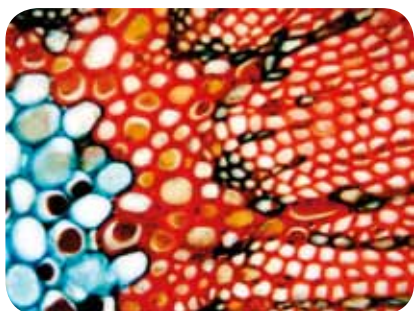
EYE PIECE CAMERA'S

The DinoEye is a range of digital eyepiece cameras. You can replace the ocular (eyepiece) of regular microscopes with the DinoEye which turns the regular microscope into a digital microscope.

Models with USB Output and resolution of 1280x1024 pixels (1.3 megapixel):

- AM423 (for 23mm ocular)
- AM423B (for 30mm ocular)
- AM423X (for 23, 30 and 30.5mm ocular)
- AM423U (universal, max. 36 mm inside diameter)

The same model specifications are also available with AV/TV Output and a resolution of 628x586 pixels.



DINO-LITE TV

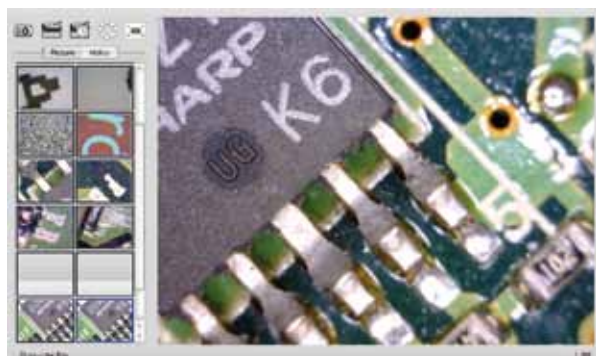
This range of Dino-Lite models is connected to the television (PAL) instead of USB. This can be a major advantage in situations where real time images are vital, such as working on PCB's or other miniature objects. This model can be directly connected to a beamer or digital blackboard without using a PC.

A broad range of models is available, such as models with a metal housing, UV light excitation, or with a polarizer filter.



DINO-LITE SOFTWARE

Included with each Dino-Lite digital microscope is a copy of the DinoCapture software for Windows machines or DinoXcope for Macintosh machines (not AM211/311). The software enables you to capture either a photograph, video or time-lapsed video with a simple click! Pictures can be saved in different formats, texts can be added to the pictures or pictures can be adjusted using the same software environment.



DinoXcope software for Macintosh™



DinoCapture software for Windows™

From the Plus series and up the software offers enhanced features like measurement (line, radius, circle, 3-point circle etc.) or calibration (only from the Pro models and up).

ACCESSOIRES AND STANDS

A broad range of stands is offered to support the Dino-Lite digital microscopes. Starting with an affordable stand with a round metal base and a flexible arm (MS32W) or a stand with a square metal base and a column providing several adaptable heights (MS35B). The MS52B is the top of the range, a very robust and professional stand.



MS32W

Round metal base with flexible arm and holder.



MS33W

The MS33W has the possibility to vary the height (appr. 15 mm) with a turning knob in the base.



M35B

Square metal base with column and support providing adaptable height.



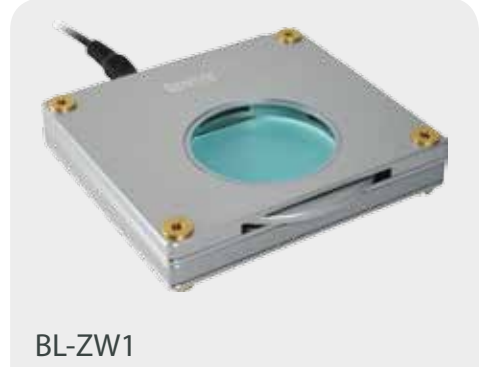
MS36B

Square metal base with column and support providing adaptable height. The MS36B has a horizontal beam to enable additional flexibility in the horizontal plane.



MS15X

The MS15X is an advanced XY table that can be used independently or in combination with the MS35B or MS36B column stands.



BL-ZW1

The BL-ZW1 Backlight table can be powered over USB or the DC adapter. It has a built in, freely rotatable polarizer that works in combination with the AM413ZT or AD413ZT polarizer models.



MS52B

Dino heavy duty jointed flex arm stand.



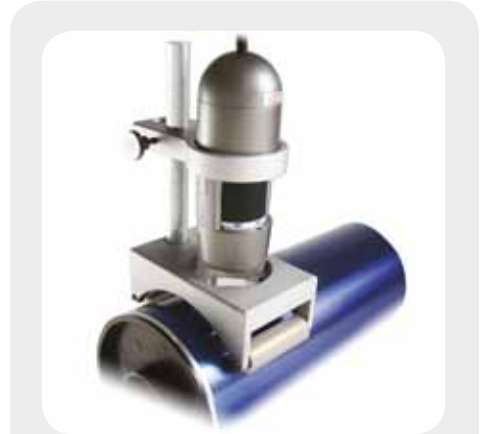
MS12C

Variable view range caddy with two variable view range adaptors, transparent.



MS16C

Specimen holder stand with different clips to hold specimens.



MS-W1

Special stand for cylinder surfaces or to roll on flat surfaces. Delivered with a HD-M1 metal holder.

Model overview

Model	Interface	Resolution	Magnification	Microtouch	Measurement	Calibration	LED	LED on/off	Diffuse lighting	Metal housing	Long working distance	Polarizer	Light excitation
Dino-X-Lite	AM413MT	USB 2.0	1,3 Megapixel	10-50x, 200x	✓	✓	✓	8	✓	✓	✓		
	AM413MT5	USB 2.0	1,3 Megapixel	500x	✓	✓	✓	8	✓	✓	✓		
	AM413MTL	USB 2.0	1,3 Megapixel	10-90x	✓	✓	✓	8	✓	✓	✓		
	AM413MTZ	USB 2.0	1,3 Megapixel	10-50x, 200x	✓	✓	✓	8	✓	✓	✓	✓	
	AM413MTLZ	USB 2.0	1,3 Megapixel	10-90x	✓	✓	✓	8	✓	✓	✓	✓	400nm
	AM413MT-VW	USB 2.0	1,3 Megapixel	10-50x, 200x	✓	✓	✓	4+4	✓	✓	✓		400nm
	AM413MT-FWW	USB 2.0	1,3 Megapixel	10-50x, 200x	✓	✓	✓	4+4	✓	✓	✓		400nm
	AM413MTL-VW	USB 2.0	1,3 Megapixel	10-90x	✓	✓	✓	4+4	✓	✓	✓	✓	400nm
	AM413MTL-FWW	USB 2.0	1,3 Megapixel	10-90x	✓	✓	✓	4+4	✓	✓	✓	✓	400nm
Model	Interface	Resolution	Magnification	Microtouch	Measurement	Calibration	LED	LED on/off	Diffuse lighting	Metal housing	Long working distance	Polarizer	Light excitation
Pro	AM411T	USB 2.0	1,3 Megapixel	10-50x, 200x	✓			8	✓				
	AM413T	USB 2.0	1,3 Megapixel	10-50x, 200x	✓	✓	✓	8	✓				
	AM413T5	USB 2.0	1,3 Megapixel	500x	✓	✓	✓	8	✓	✓			
	AM413FVT	USB 2.0	1,3 Megapixel	10-50x, 200x	✓	✓	✓	8	✓				400nm
	AM413FVT2	USB 2.0	1,3 Megapixel	10-50x, 200x	✓	✓	✓	4	✓				375nm
	AM413FIT	USB 2.0	1,3 Megapixel	10-50x, 200x	✓	✓	✓	8	✓				815nm
	AM413T-FWW	USB 2.0	1,3 Megapixel	10-50x, 200x	✓	✓	✓	4+4	✓				400nm
	AM413T-VW	USB 2.0	1,3 Megapixel	10-50x, 200x	✓	✓	✓	4+4	✓				400nm
	AM413TL	USB 2.0	1,3 Megapixel	10-90x	✓	✓	✓	8	✓			✓	
	AM413TL-FWW	USB 2.0	1,3 Megapixel	10-90x	✓	✓	✓	4+4	✓			✓	400nm
	AM413TL-VW	USB 2.0	1,3 Megapixel	10-90x	✓	✓	✓	4+4	✓			✓	400nm
AM413TZ	USB 2.0	1,3 Megapixel	10-50x, 200x	✓	✓	✓	8	✓			✓		
Model	Interface	Resolution	Magnification	Microtouch	Measurement	Calibration	LED	LED on/off	Diffuse lighting	Metal housing	Long working distance	Polarizer	Light excitation
AD PRO 2	AD413T	USB 2.0	1.3 M	10-50x, 200x	✓	✓	✓	8	✓				
	AD413TL	USB 2.0	1.3 M	10-90x	✓	✓	✓	8	✓		✓		
	AD413MT	USB 2.0	1.3 M	10-50x, 200x	✓	✓	✓	8	✓	✓			
	AD413MTL	USB 2.0	1.3 M	10-90x	✓	✓	✓	8	✓	✓	✓		
	AD413ZT	USB 2.0	1.3 M	10-50x, 200x	✓	✓	✓	8	✓			✓	
	FC-MA1												
Model	Interface	Resolution	Magnification	Microtouch	Measurement	Calibration	LED	LED on/off	Diffuse lighting	Metal housing	Long working distance	Polarizer	Light excitation
Plus	AM313	USB 2.0	640x480	10-50x, 200x		✓		8	✓				
	AM313T	USB 2.0	640x480	10-50x, 200x	✓	✓		8	✓				
	AM313T5	USB 2.0	640x480	500x	✓	✓		8	✓	✓			
	AM313FVT	USB 2.0	640x480	10-50x, 200x	✓	✓		8	✓				400nm
Model	Interface	Resolution	Magnification	Microtouch	Measurement	Calibration	LED	LED on/off	Diffuse lighting	Metal housing	Long working distance	Polarizer	Light excitation
Basic	AM211	USB 1.1	640x480	10-50x, 200x				4					
	AM311S	USB 2.0	640x480	10-50x, 200x				8	✓				
	AM311ST	USB 2.0	640x480	10-50x, 200x	✓			8	✓				

Model	Interface	Resolution	Magnification	Microtouch	Measurement	Calibration	LED	LED on/off	Diffuse lighting	Metal housing	Long working distance	Polarizer	Light excitation	
Life Sciences	AMH-RUT	USB 2.0	1.3 M	20x	✓	✓	2	✓						
	AM311H	USB 2.0	640x480	20-30x			4							
	AMH-EUT	USB 2.0	1,3 M	55-90x	✓		6	✓						
	AMH-N5UT	USB 2.0	1,3 M	500x	✓		8							
	AMH-DUT	USB 2.0	1,3 M	20-30x	✓	✓	8							
	AM311ST-SC	USB 2.0	640x480	10-50x, 200x	✓		8	✓						
Model	Interface	Resolution	Magnification	Microtouch	Measurement	Calibration	LED	LED on/off	Diffuse lighting	Metal housing	Long working distance	Polarizer	Light excitation	
TV	AM412P	TV PAL	628 x 586	10-50x, 200x			8							
	AM412PT	TV PAL	628 x 586	10-50x, 200x			8	✓						
	AM412PZ	TV PAL	628 x 586	10-50x, 200x			8					✓		
	AM412PL	TV PAL	628 x 586	10-90x			8				✓			
	AM412PTL	TV PAL	628 x 586	10-90x			8	✓			✓			
	AM412MP	TV PAL	628 x 586	10-50x, 200x			8		✓	✓				
	AM412FVP	TV PAL	628 x 586	10-50x, 200x			8						400nm	
	AM412MZP	TV PAL	628 x 586	10-50x, 200x			8				✓		✓	
Model	Interface	Resolution	Magnification	Microtouch	Measurement	Calibration	LED	LED on/off	Diffuse lighting	Metal housing	Long working distance	Polarizer	Light excitation	
Dino-Eye	AM423	USB 2.0	1,3 M		✓									
	AM423B	USB 2.0	1,3 M		✓									
	AM422	TV PAL	628 x 586											
	AM422B	TV PAL	628 x 586											
	AM423U	USB 2.0	1,3 M		✓									
	AM422PU	TV PAL	628 x 586											
	AM423X	USB 2.0	1,3 M		✓									
	AM422PX	TV PAL	628 x 586											
Model	Interface	Resolution	Magnification	Microtouch	Measurement	Calibration	LED	LED on/off	Diffuse lighting	Metal housing	Long working distance	Polarizer	Light excitation	
Mobile	AMK412 (+C200)	Proprietary	628 x 586	10-50x, 200x			8							
	AMK412Z (+C200)	Proprietary	628 x 586	10-50x, 200x			8					✓		
	AMK412L (+C200)	Proprietary	628 x 586	10-90x			8				✓			
	AMK412-FV (+C200)	Proprietary	628 x 586	10-50x, 200x			8							
	AMK412-FV2 (+C200)	Proprietary	628 x 586	10-50x, 200x			8							
Model														
Stands & Accessories	MS12C	Dino Table holder transparent												
	MS15X	Dino XY table												
	MS16C	Dino Object holder stand												
	MS32W	Dino Table Stand (metal base)												
	MS33W	Dino Table Stand Orientable (metal base)												
	MS35B	Dino metal stand, vertical stand with up to 360 degrees of horizontal rotational perspective												
	MS36B	Dino metal stand, vertical stand with horizontal beam												
	MS52B	Dino heavy duty jointed flex arm stand												
	MS52BA	Dino heavy duty jointed flex arm stand with table base												
	FC-L-MA1	Mirror angle adapter fits onto the AD413TL and AD413MTL												
	BL-ZW1	Dino-Lite backlight table												
	BL-GC1	Gem clip accessory for the BL-ZW1 backlight												
	FC-L-TB1	Tubular accessory for the AD413TL and AD413MTL models												
	caps for AD models	All kind of caps for the AD models are available, check www.dino-lite.eu												

