



Upright Microscope
ECLIPSE
Ci-E/Ci-L

Feel the evolution

Compact research microscope with superior optical performance

Nikon has drawn on its proven optics and mechanical design technologies to develop the compact and high-performance ECLIPSE Ci series research microscope.

High-quality objective lenses and a dedicated epi-fluorescence attachment provide bright and high contrast fluorescence images. Image capture of specimens is easy and efficient when the microscope is configured with Nikon Digital Sight series cameras. In addition, a newly developed high luminescent LED illumination and accessories that allow for a comfortable posture during observation and imaging are also available. With its high-optical performance and advanced easy control, the ECLIPSE Ci series supports the research of a broad range of user applications.

- **High-intensity, uniform LED illumination (Eco-illumination)**
- **Compact dedicated fluorescence unit**
- **Reliable high-performance objective lens**
- **Observation and image capture with comfortable posture**
- **Motorized magnification switching by the push of a button (Ci-E)**
- **Simple image capturing by the push of a button on the microscope**
- **Enables a wide variety of observations**



Configuration of Ci-L with epi-fluorescence attachment and DS-Fi1c camera

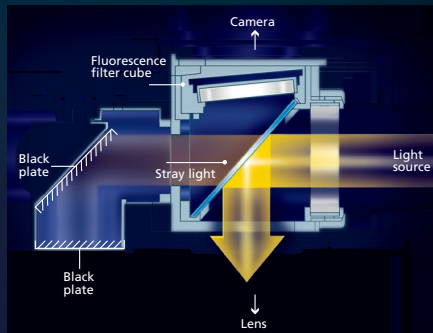
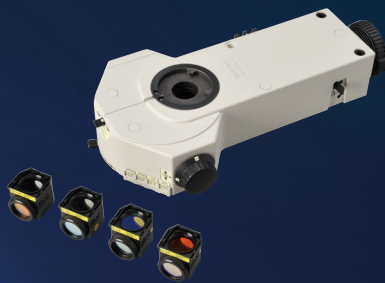
High quality images powered by Nikon's reputed optical technologies

Nikon's well-reputed optical technologies enable the capture of sharp and high quality images in a wide variety of techniques, including brightfield and epi-fluorescence observations. The epi-fluorescence attachment of the ECLIPSE Ci series allows weakly fluorescent specimens to be captured with great clarity and brightness.

Epi-fluorescence attachment

The dedicated noise terminator for the Ci series is utilized in the compact epi-fluorescence attachment and this allows bright, high-contrast and high signal to noise (S/N) ratio fluorescence image capturing.

Two epi-fluorescence attachments are available, CI-FL (four filter cubes mountable) and D-FL (six filter cubes mountable). The name and position of the filter cubes are displayed in front of the attachment with phosphorescent labels for easy identification in darkened rooms. The filters or dichroic mirrors in the filter cubes can be easily replaced to create a more specific combination



Noise terminator mechanism



High-optical performance objective lenses

CFI Plan Apochromat Lambda series

With remarkably high NA, greatly improved transmission in the long wavelength range thanks to Nikon proprietary Nano Crystal Coat, and chromatic aberration correction over wide wavelength range, these objectives are ideally suited not only to brightfield observations but also to fluorescence observations. Bright images can be captured even with a weak excitation light, thereby reducing damage to the specimen.



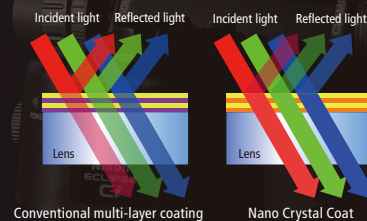
CFI Plan Fluor series

Featuring an extra-high transmission rate, especially in the ultraviolet wavelength, combined with flatness of field, this series is perfect for fluorescence observation and imaging. These objectives can function as multi-purpose objectives for brightfield, fluorescence and simple/sensitive color polarizing observations.



Nano Crystal Coat

This anti-reflective coating with nanometer-size particles is based on semiconductor manufacturing technology and is also used for Nikon camera lenses. The coarse structure with particles arranged in a spongy construction with uniform spaces between them enables extremely low refractive indices.

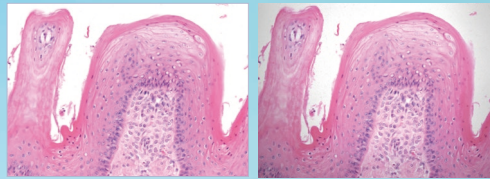
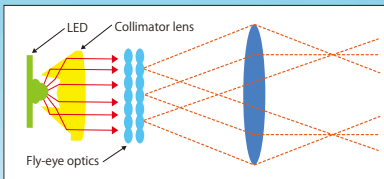


Unparalleled basic performance

Nikon has created a highly advanced basic performance with the ECLIPSE Ci-E/Ci-L — including bright illumination, various accessories that enable comfortable observation posture, and convenient motorized operations.

Eco-illumination

By combining a collimator lens, fly-eye optics and LED illumination, bright and uniform images up to the periphery can be obtained. The LED is a low power consumption unit that reduces lamp replacement frequency thanks to its long-life, and provides the same color temperature in every magnification. (Patent pending)



Viewed with Eco-illumination Viewed without Eco-illumination

*These images are captured without using the shading compensation to emphasize the vignetting.



Ci-E (Motorized model)

Ergonomic design

Various accessories that allow observation and image capturing with comfortable posture.



Ergonomic binocular tube

Eyepiece angle (10° - 30°) and extension (up to 40mm) are adjustable. A camera can be mounted via the DSC port.



Eyelevel riser

Eye-point height can be raised in 25mm increments to suit your normal posture.



Stage with height-adjustable handle

Smooth stage movement is achievable with a comfortable hand position.



Lower stage positioning

Stage height can be lowered 20mm from the standard position using the nosepiece spacer for easy specimen change with comfortable posture.

Motorized model Ci-E

Equipped with motorized magnification switching and automatic intensity reproduction, it is ideally suited to applications that require frequent magnification switching.

Nosepiece rotating buttons

The nosepiece can be rotated with one-touch button control. In addition, your two favorite magnifications can be registered*, and one press of the button alternates between these two objective lenses.

* Using the remote control pad.



Remote control pad

By programming specific buttons to correspond to specific objective lenses, magnification can be easily changed with a one touch button.



Auto light intensity reproduction

The user-defined light intensity for each objective lens is automatically memorized and replicated when the objective is used again, eliminating the manual re-adjustment.

Enhanced operability for digital imaging

The ECLIPSE Ci series microscope, imaging system Digital Sight series and imaging software NIS-Elements support smart image capturing with enhanced function.

Image capture button

Imaging with the Digital Sight series cameras is possible with the one touch button located on the microscope base.



Camera control unit Digital Sight DS-L3

The stand-alone controller with a large-size display monitor enables image capture without a computer. The touch panel allows simple setting and operation of a Digital Sight camera by simply choosing the observation technique using scene mode icons. Simple measurement functions, such as distance measurement between two points, are available. In addition, objective lens switching and Ci-E condenser setting are also possible. A network function enables image sharing of live images with multiple remote PCs during observation.



* DS-L3 cannot be connected to DS-Ri2 and DS-Qi2 cameras.

Imaging software NIS-Elements

By connecting the Ci-E/Ci-L with a Digital Sight series camera* and a PC, the capturing, processing, measuring, analyzing and management of images becomes possible, using the dedicated imaging software NIS-Elements.

* To connect a C-mount camera head and a PC, a DS-L3 or DS-U3 control unit is required.

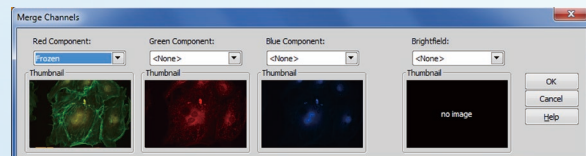
Live image comparison

Enables easy image comparison between a captured image and a live image. Live observation side by side with a paused live image is also available.



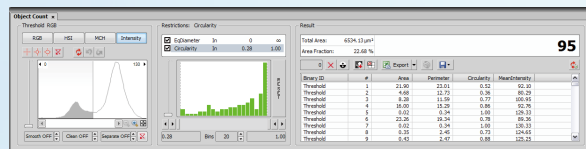
Merge channels

Multiple single channel images can be merged together to create an overlay of full depth separately scalable images.



Object counting

This measures the number or area of objects extracted from images and is achieved by the creation of a binary layer through thresholding, using RGB/HIS or intensity values.



Digital Sight series C-mount camera heads

- High-definition color camera head DS-Fi2
- High-definition cooled camera head DS-Fi1c



- 5.0-megapixel CCD
- Up to 2,560 x 1,920 pixels
- High-speed movie display up to 21 fps is possible.



- 5.0-megapixel CCD
- Up to 2,560 x 1,920 pixels
- Equipped with a Peltier cooling device that retains the CCD at an ambient temperature of -20°C to reduce heat noise, it is ideally suited for capturing fluorescent images.

Digital Sight series F-mount microscope cameras

- Microscope Camera DS-Ri2
- Monochrome Microscope Camera DS-Qi2



- 16.25-megapixels
- Up to 4908 x 3264 pixels

Equipped with digital SLR camera FX-format CMOS sensor. Provides superior color reproduction and fast frame rates.



- 16.25-megapixels
- Up to 4908 x 3264 pixels

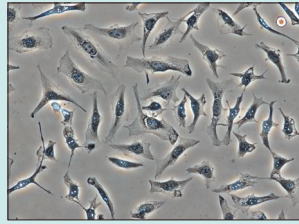
Equipped with FX-format CMOS sensor. Enables high-sensitivity, low-noise images.

Accessories for various observations

The ECLIPSE Ci-E/Ci-L uses a high-intensity Eco-illumination that provides sufficient light intensity even for phase contrast and simple polarizing observation. The wide variety of accessories enables the user to conduct various techniques including epi-fluorescence observation.

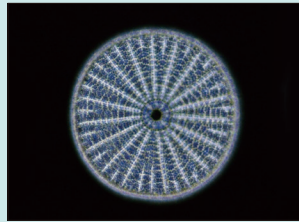
Phase contrast

High contrast images with neutral background coloration regardless of the magnification range can be acquired. This observation technique is suitable for observation of the unstained structure.



Darkfield

Enables clear observation of blood or the minute structure of flagella. Dry- and oil-type condensers are available. The expander lens is used to obtain illumination with greater brightness.



Simple polarizing

This is ideal for observing bi-refringent samples such as collagen, amyloids and crystals.

*Two types of analyzer are available: intermediate tube type and nosepiece slider type.



Ci-L with phase contrast accessories

Sensitive color polarizing

This enables the identification of uric acid crystals forming inside an organism by changing the interference color and is ideal for gout and pseudo-gout tests.

*Two types of analyzer are available: intermediate tube type and nosepiece slider type.



ECLIPSE Ni-E/Ni-U

New advanced research microscopes ECLIPSE Ni series

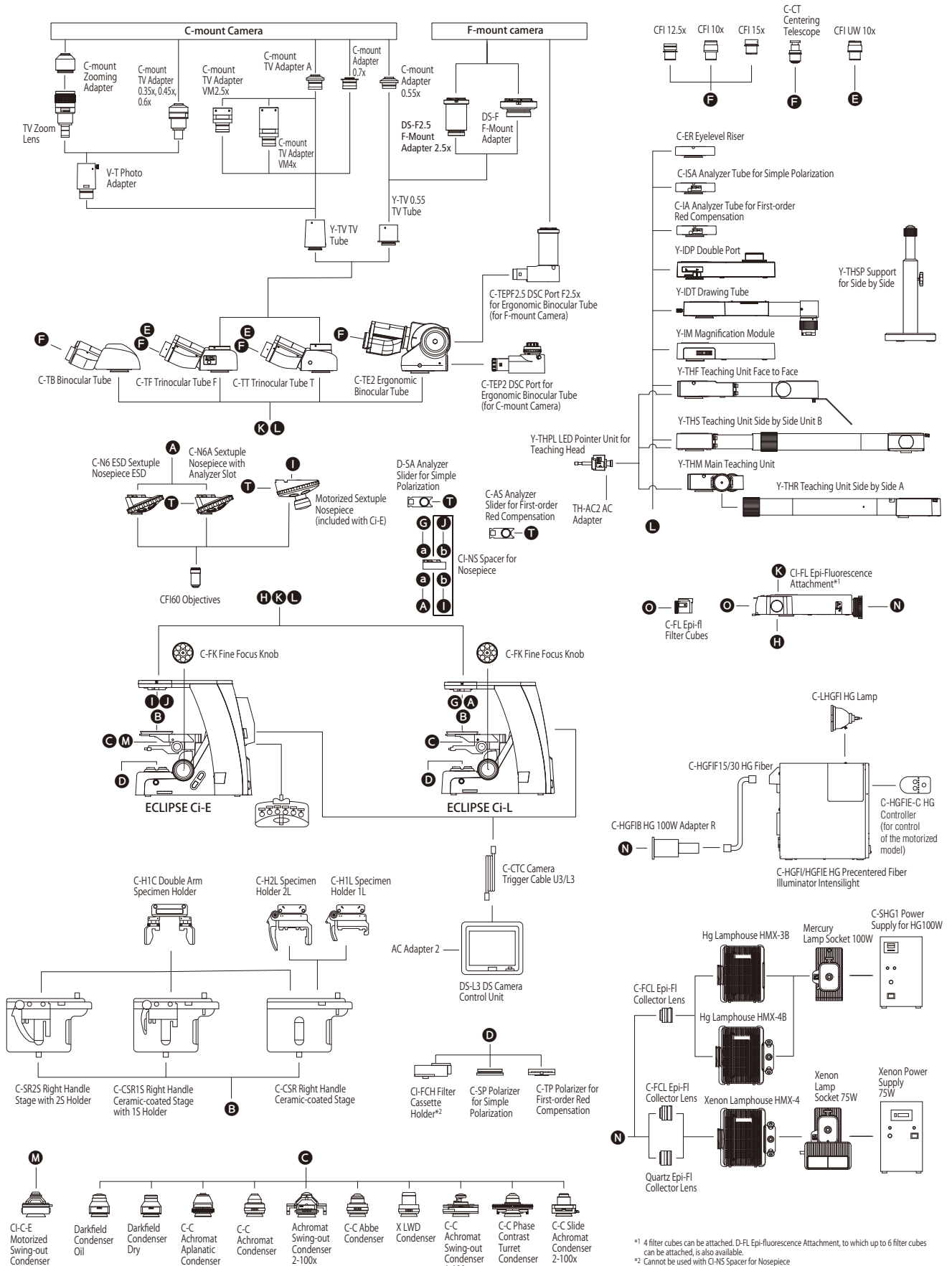
The ECLIPSE Ni series is the flagship of Nikon's upright research microscopes. They provide high optical performance and high expandability with various motorized accessories utilizing stratum structure.

- Manual model Ni-U with advanced basic performance
- Fully motorized model Ni-E with motorized focusing and auto observation technique switching.
- Fly-eye optics enable the capture of bright and uniform illuminated digital images.
- The noise terminator mechanism equipped in the epi-fluorescence system enables high S/N ratio image.



Ni-U with motorized epi-fluorescence attachment and Digital Sight series cameras

System Diagram



^{#1} 4 filter cubes can be attached. D-FL Epi-fluorescence Attachment, to which up to 6 filter cubes can be attached, is also available.
^{#2} Cannot be used with CH-NS Spacer for Nosepiece

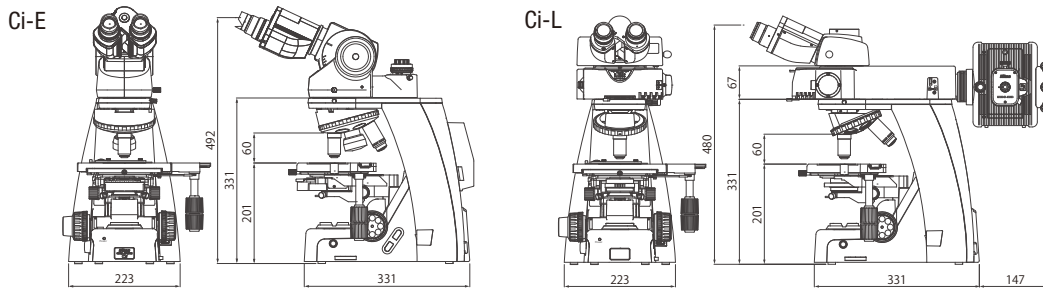
Specifications

		Ci-E	Ci-L
Main body	Optical system	CFI60 Infinity Optical System	
	Illumination	High luminescent White LED Illuminator (Eco-illumination)	
		Automatic intensity reproduction function	—
	Controls	Image capture button	
		Nosepiece rotating buttons, Remote control pad	—
Eyepieces (F.O.V. mm)	· CFI 10× (22) · CFI 12.5× (16) · CFI 15× (14.5) · CFI UW 10× (25)		
Focusing	Coaxial Coarse/Fine focusing, Stroke: 30 mm, Coarse: 9.33 mm/rotation, Fine: 0.1 mm/rotation, Coarse motion torque adjustable, Refocusing function		
Tubes	F.O.V. 22 mm (Eyepiece/Port)	· C-TB Binocular Tube · C-TE2 Ergonomic Binocular Tube (100/0, 50/50 via optional C-TEP2 DSC Port or C-TEPF2.5 DSC Port F2.5x) Inclination angle: 10-30 degree, Extension: up to 40 mm	
	F.O.V. 25 mm (Eyepiece/Port)	· C-TF Trinocular Tube F (100/0, 0/100) · C-TT Trinocular Tube T (100/0, 20/80, 0/100)	
Nosepieces	· Motorized Sextuple Nosepiece with Analyzer Slot (Within main body) Switching between two objectives function	· C-N6 ESD Sextuple Nosepiece ESD · C-N6A Sextuple Nosepiece with Analyzer Slot	
Stages	Cross travel 78 (X) × 54 (Y) mm, with vernier calibrations, stage handle height and torque adjustable for all stages C-HIC Double Arm Specimen Holder is available as an option for the below three stages. · C-SR2S Right Handle Stage with 2S Holder · C-CSR1S Right Handle Ceramic-coated Stage with 1S Holder · C-CSR Right Handle Ceramic-coated Stage (C-H2L Specimen Holder 2L and C-H1L Specimen Holder 1L can be attached)		
Condensers (NA)	Motorized	· CI-C-E Motorized Swing-out Condenser (0.9/0.22) Focusing stroke: 27 mm	—
	Manual	Focusing stroke: 27 mm · C-C Abbe Condenser (0.9) · C-C Achromat Condenser (0.8) · Darkfield Condenser Oil (1.2-1.43) · Darkfield Condenser Dry (0.8-0.95) · C-C Phase Contrast Turret Condenser (0.9) · C-C Achromat Aplanatic Condenser (1.4) · C-C Slide Achromat Condenser 2-100× (0.9) · C-C Achromat Swing-out Condenser 1-100× (0.8/0.12) · Achromat Swing-out Condenser 2-100× (0.9/0.22) · X LWD Condenser (0.65)	
Observation methods*	Brightfield, Epi-fluorescence, Darkfield, Phase contrast, Simple polarizing, Sensitive color polarizing		
Epi-fluorescence attachment	· CI-FL Epi-fluorescence Attachment (4 filter cubes mountable) · D-FL Epi-fluorescence Attachment (6 filter cubes mountable) ND4/ND8/ND16 filters, Noise Terminator mechanism		
Epi-fluorescence light source	· C-HGFI/HGFI-E HG Precentered Fiber Illuminator Intensilight (130W) · Hg Lamphouse and Power Supply (100W) · Xenon Lamphouse and Power Supply (75W)		
Power consumption	13W (Brightfield configuration)	6W (Brightfield configuration)	
Weight (approx.)	15.4 kg (Binocular standard set)	13.4 kg (Binocular standard set)	

*Observations except Brightfield require optional accessories.

Dimensional Diagram

Unit: mm



Configured with Ergonomic Binocular Tube and DSC port

Configured with Fluorescence Attachment and Trinocular Tube T

Company names and product names appearing in this brochure are their registered trademarks or trademarks. N.B. Export of the products* in this brochure is controlled under the Japanese Foreign Exchange and Foreign Trade Law. Appropriate export procedure shall be required in case of export from Japan. *Products: Hardware and its technical information (including software) Monitor images are simulated.

Specifications and equipment are subject to change without any notice or obligation on the part of the manufacturer. September 2015 ©2011-15 NIKON CORPORATION



NIKON CORPORATION

Shinagawa Intercity Tower C, 2-15-3, Konan, Minato-ku, Tokyo 108-6290, Japan
phone: +81-3-6433-3705 fax: +81-3-6433-3785
<http://www.nikon.com/instruments/>

NIKON INSTRUMENTS INC.

1300 Walt Whitman Road, Melville, N.Y. 11747-3064, U.S.A.
phone: +1-631-547-8500; +1-800-52-NIKON (within the U.S.A. only)
fax: +1-631-547-0306
<http://www.nikoninstruments.com/>

NIKON INSTRUMENTS EUROPE B.V.

Tripolis 100, Burgenweeshuispad 101, 1076 ER Amsterdam, The Netherlands
phone: +31-20-7099-000 fax: +31-20-7099-298
<http://www.nikoninstruments.eu/>

NIKON INSTRUMENTS (SHANGHAI) CO., LTD.

CHINA phone: +86-21-6841-2050 fax: +86-21-6841-2060
(Beijing branch) phone: +86-10-5831-2028 fax: +86-10-5831-2026
(Guangzhou branch) phone: +86-20-3882-0550 fax: +86-20-3882-0580

NIKON SINGAPORE PTE LTD

SINGAPORE phone: +65-6559-3651 fax: +65-6559-3668

NIKON INSTRUMENTS KOREA CO., LTD.

KOREA phone: +82-2-2186-8400 fax: +82-2-555-4415

NIKON CANADA INC.

CANADA phone: +1-905-602-9676 fax: +1-905-602-9953

NIKON FRANCE S.A.S.

FRANCE phone: +33-1-4516-45-16 fax: +33-1-4516-45-55

NIKON GMBH

GERMANY phone: +49-211-941-42-20 fax: +49-211-941-43-22

NIKON INSTRUMENTS S.p.A.

ITALY phone: +39-55-300-96-01 fax: +39-55-30-09-93

NIKON AG

SWITZERLAND phone: +41-43-277-28-67 fax: +41-43-277-28-61

NIKON UK LTD.

UNITED KINGDOM phone: +44-208-247-1717 fax: +44-208-541-4584

NIKON GMBH AUSTRIA

AUSTRIA phone: +43-1-972-6111-00 fax: +43-1-972-6111-40

NIKON BELUX

BELGIUM phone: +32-2-705-56-65 fax: +32-2-726-66-45



ISO 9001 Certified
for NIKON CORPORATION
Microscope Solutions Business Unit
Industrial Metrology Business Unit



ISO 14001 Certified
for NIKON CORPORATION